

Rongowhakaata

GIS Map Booklet

Moka Apiti
Crown Forestry Rental Trust
February, 2002

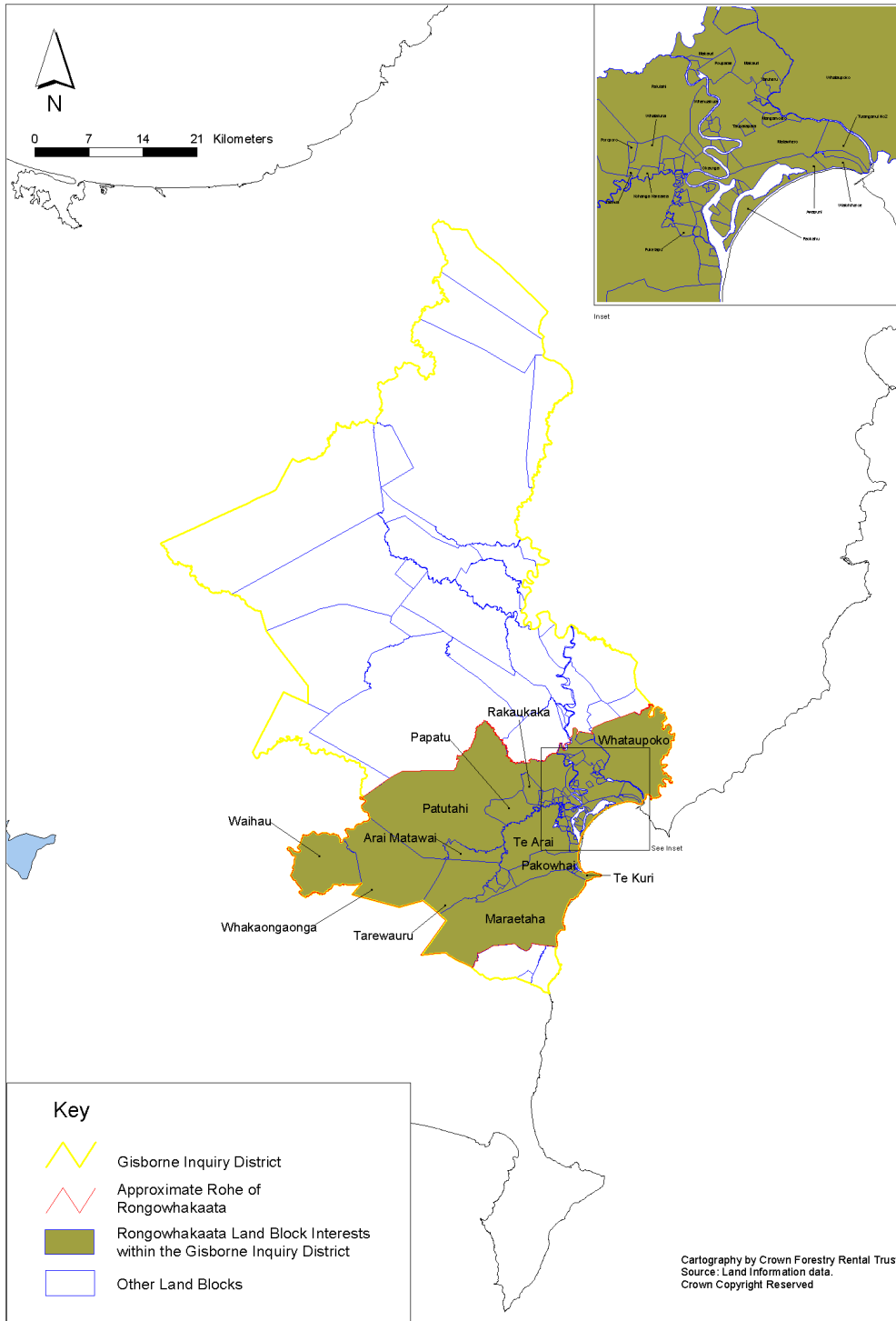


CROWN FORESTRY
RENTAL TRUST

NGĀ KAITIĀKI RĒTI NGAHERE KARAUNA

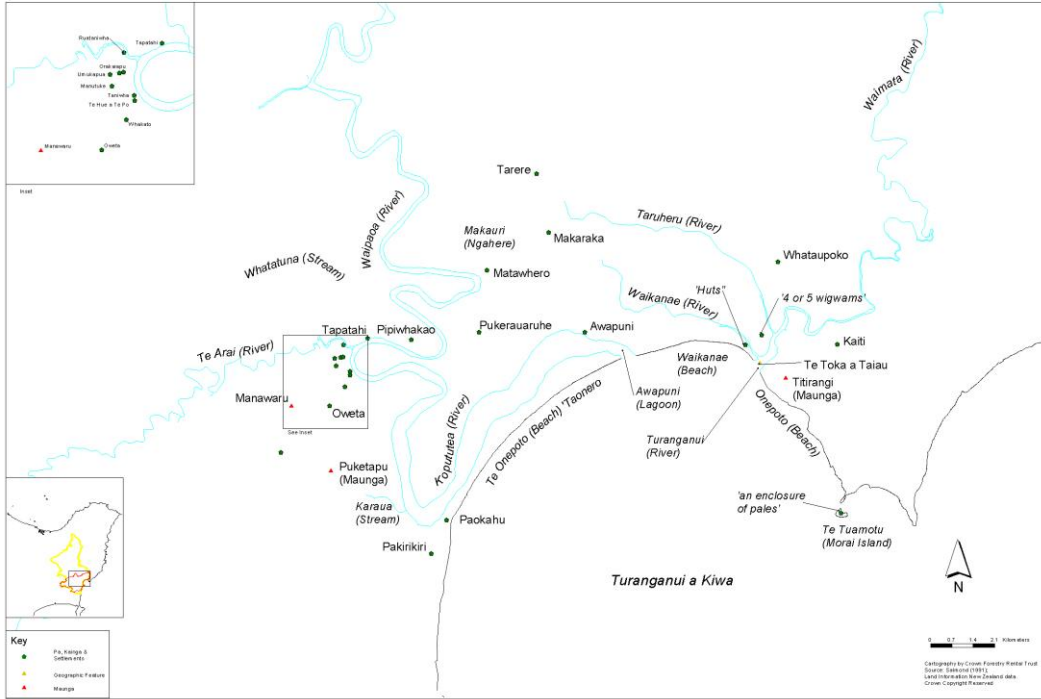
Table of Content

1. Rongowhakaata Tribal Domain and the Gisborne Inquiry District
2. Some Historic Sites of Rongowhakaata
3. Approximate Hapu Areas of Rongowhakaata
4. Biggs Map 1867
5. Sketch Map of the land Conceded to the Crown by the Native Owners
6. Rongowhakaata Tribal Domain and the 1868 Deed of Cession Boundary
7. Patutahi Land Block
8. Land Blocks as depicted from Rongowhakaata and the Native Land Court 1873-1900
Report from Cleaver and Small
9. Land Blocks as depicted from Rongowhakaata and the Native Land Court 1873-1900
Report from Cleaver and Small
10. Changes in the Waipaoa River since 1868 (Waipaoa River data courtesy Landcare and
Gisborne District Council)
11. Marae of Rongowhakaata
12. Main Land Blocks in the Gisborne Inquiry District
13. Land Blocks – detail of Waipaoa River Flats
14. Land Blocks – Southern Land Blocks

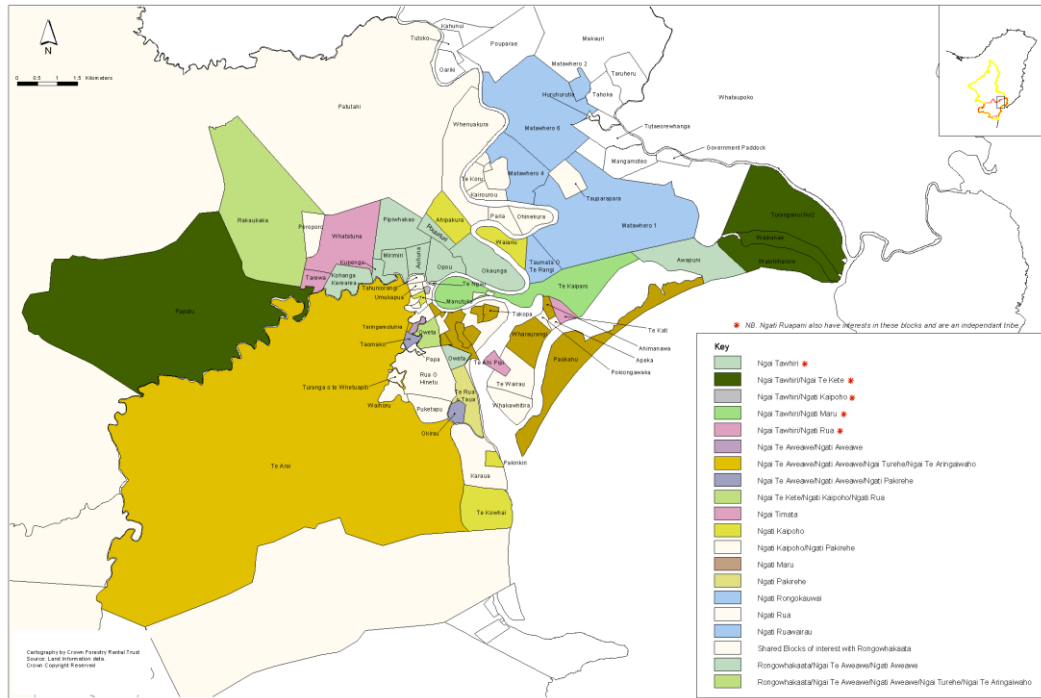


Map 1 Rongowhakaata Tribal Domain and the Gisborne Inquiry District

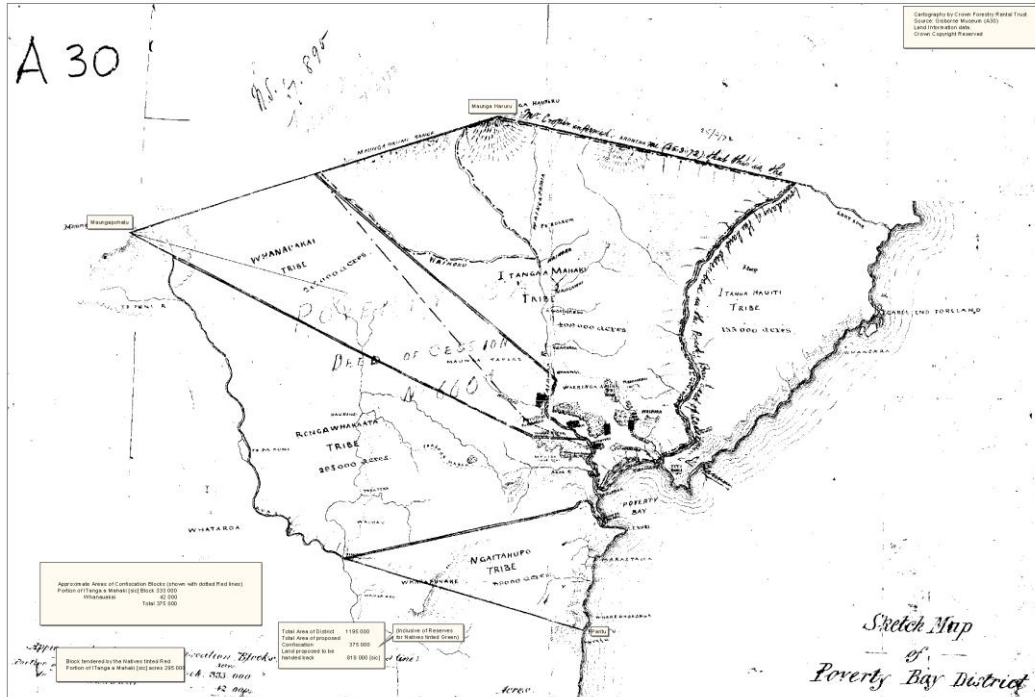




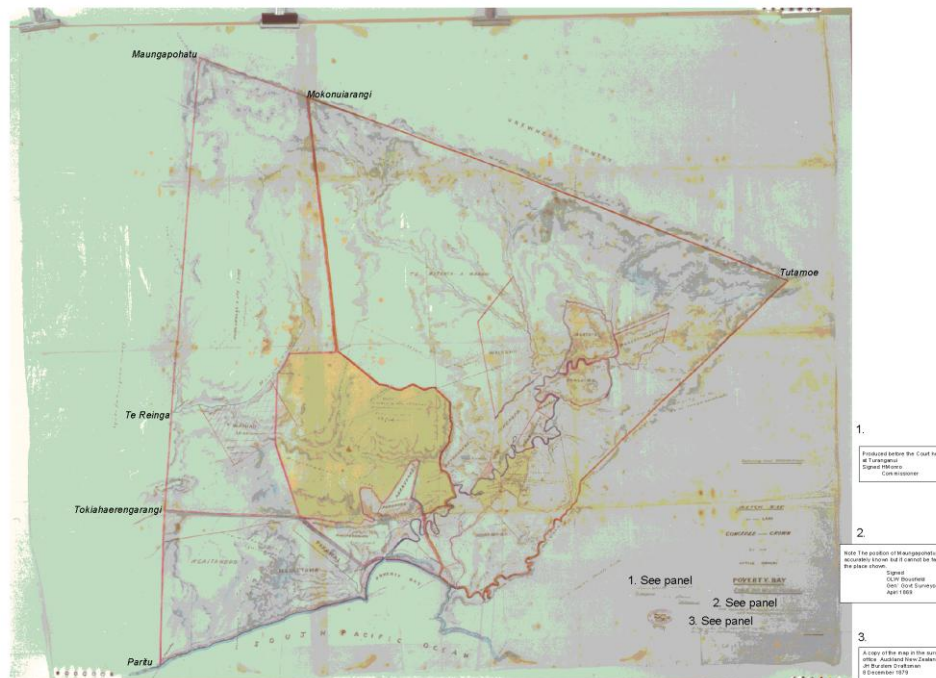
Map 2 Some Historic Sites of Rongowhakaata



Map 3 Approximate Hapu Areas of Rongowhakaata

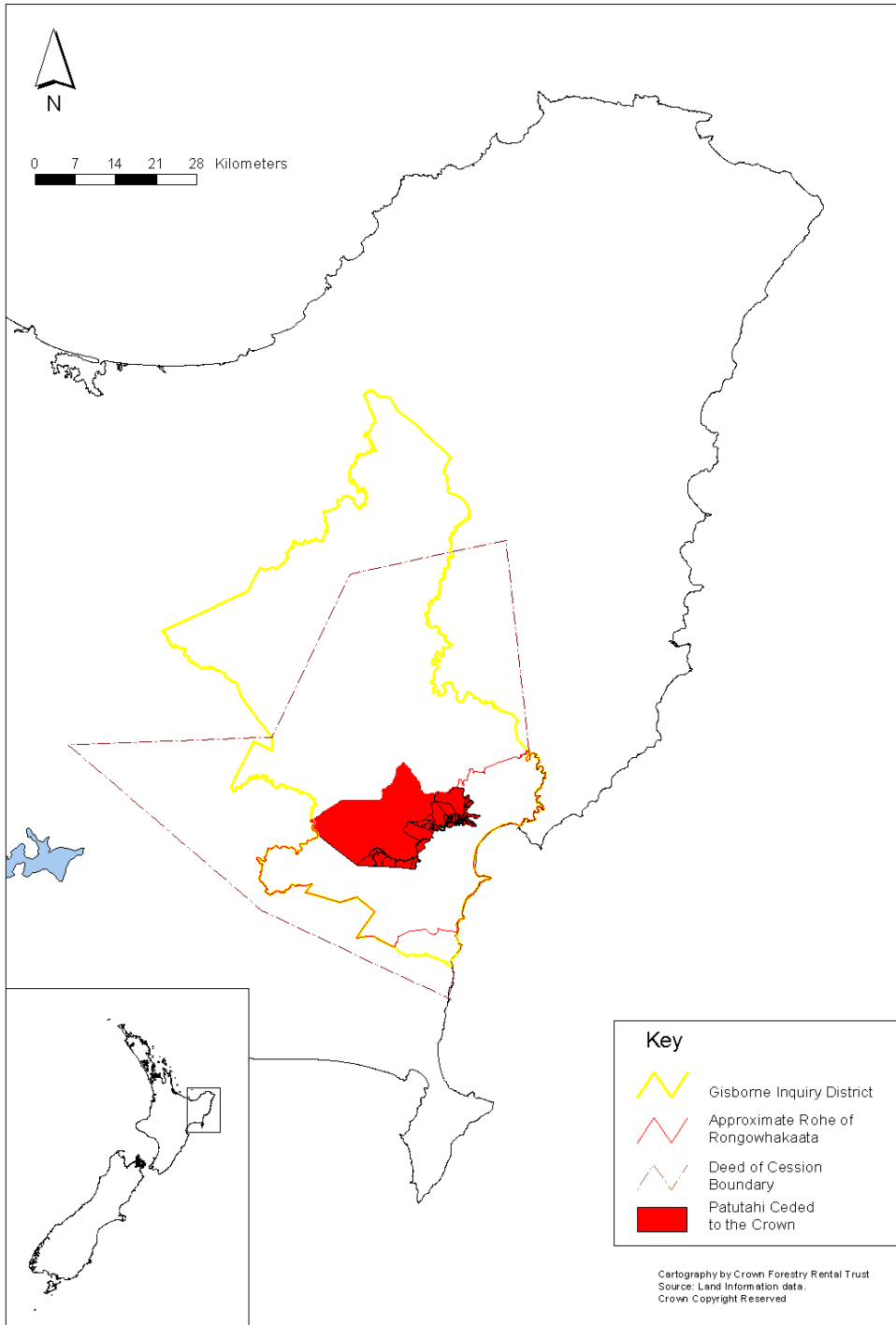


Map 4 Biggs Map 1867



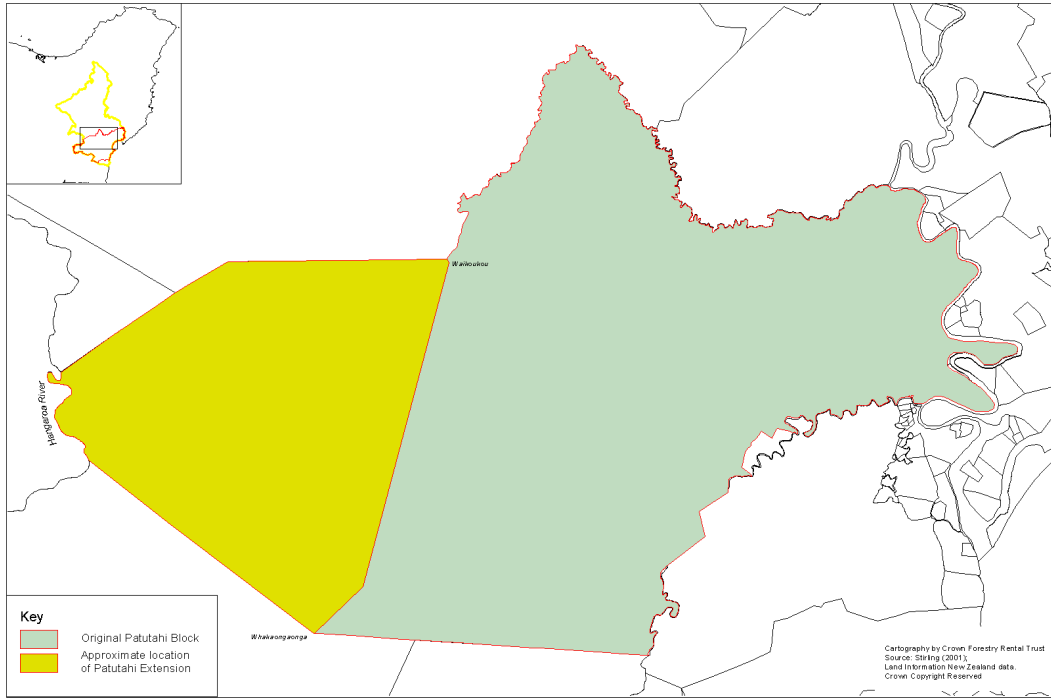
Map 5 Sketch Map of the Land Conceded to the Crown by the Native Owners

Source: MA 62/9 NAW.



Map 6 Rongowhakaata Tribal Domain and the 1868 Deed of Cession Boundary

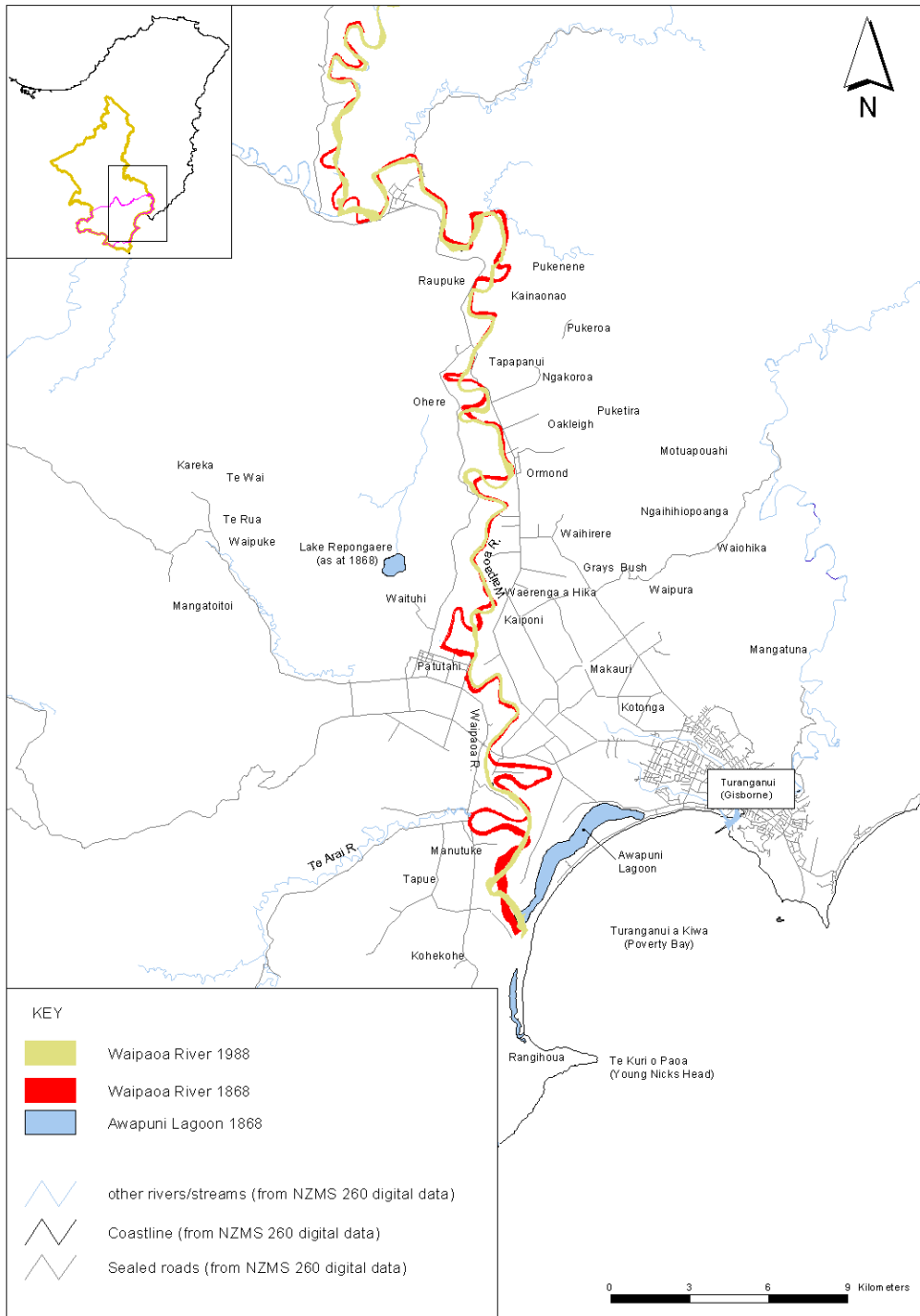




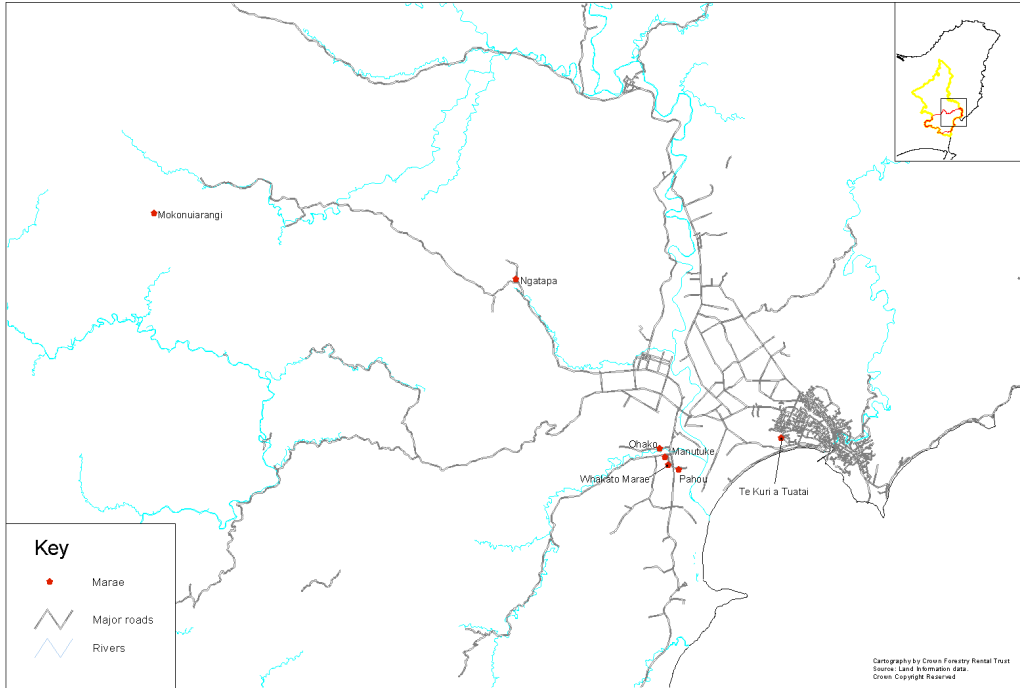
Map 7 Patutahi Land Block



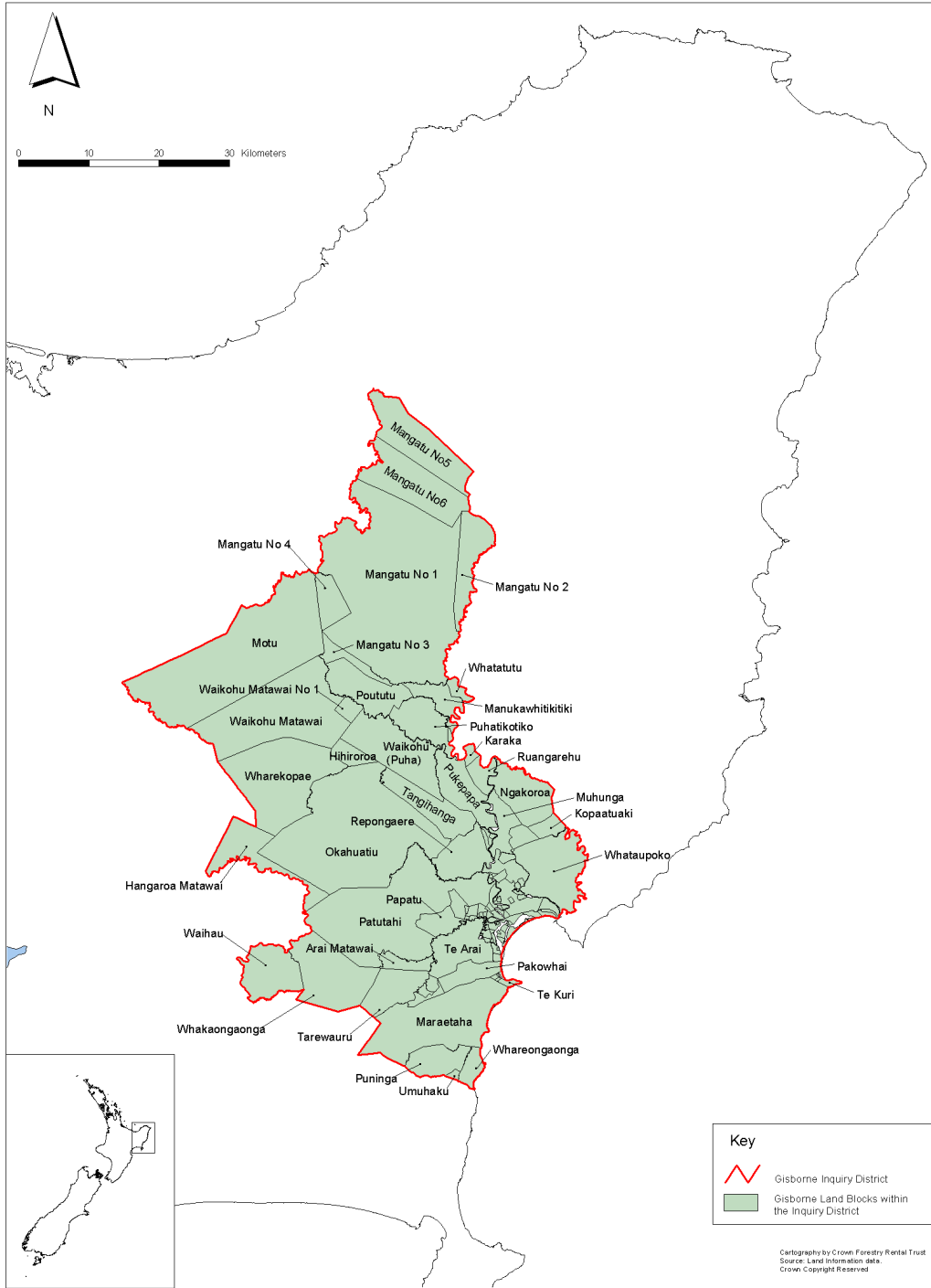
Map 8 Land blocks as depicted from Rongowhakaata and the Native Land Court 1873-1900
Report from Cleaver and Small



Map 10 Changes in the Waipaoa River since 1868
 (Waipaoa River data courtesy Landcare and Gisborne District Council)



Map 11 Marae of Rongowhakaata



Map 12 Main Blocks in the Gisborne Inquiry District



